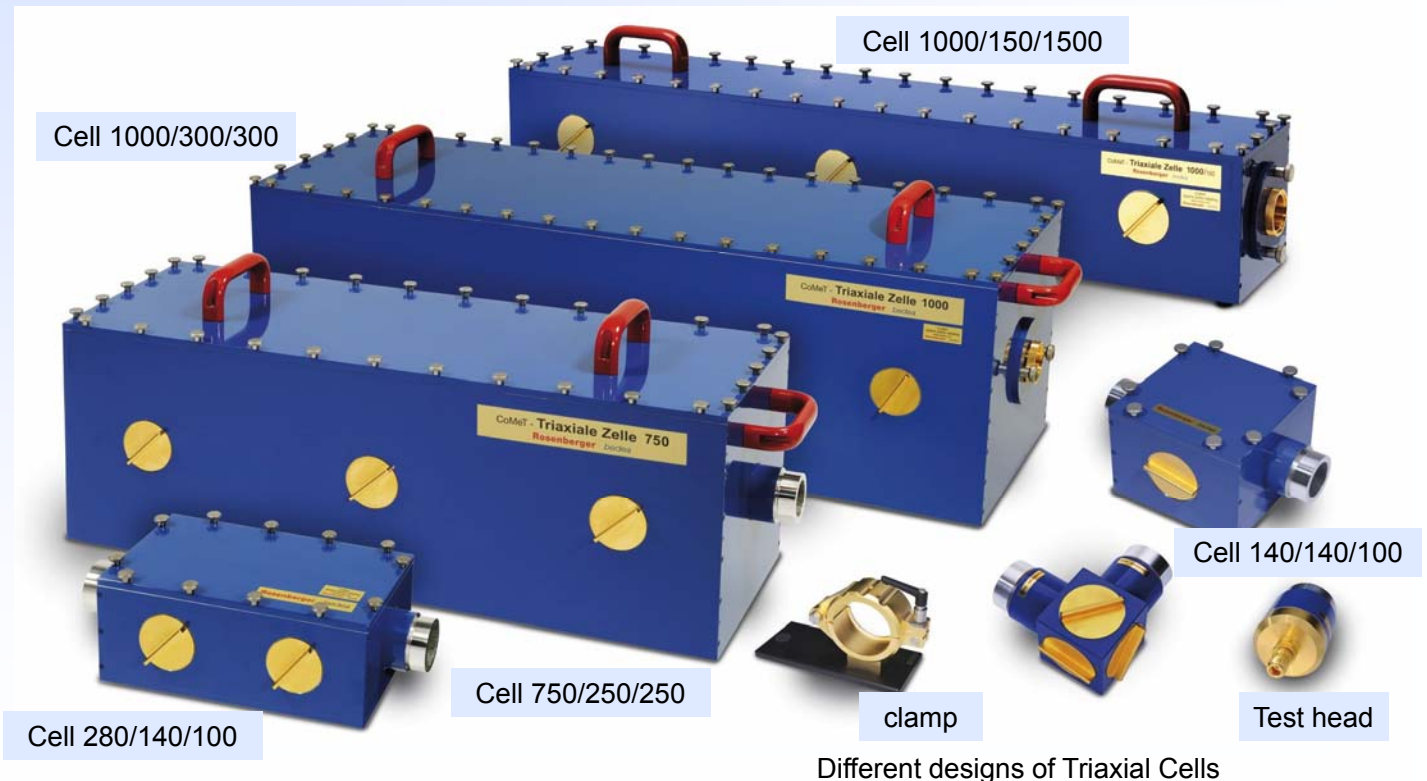


Higher order mode suppression in Triaxial cells



Different designs of Triaxial Cells

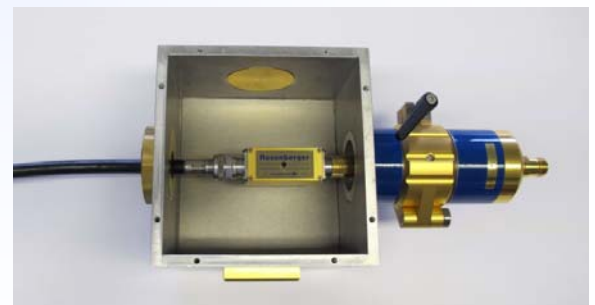
65rd IWCS Conference, Providence, Rhode Island, USA, October 2016

Bernhard Mund, bedea Berkenhoff&Drebes GmbH, Herborner Strasse 100, 35614 Asslar, Germany, www. bedea.com, bmund@bedea.com

Overview

Higher order Mode Suppression in Triaxial Cells (Improvement of Triaxial Cell procedure)

- Triaxial test procedure
 - ◆ Transfer impedance, & Screening attenuation
 - ◆ Triaxial Cell
- Higher order modes
- Influence of absorbers
- Measurements
 - ◆ with and without absorber
- Conclusion
- Discussion



65rd IWCS Conference, Providence, Rhode Island, USA, October 2016

Bernhard Mund, bedea Berkenhoff&Drebes GmbH, Herborner Strasse 100, 35614 Asslar, Germany, www. bedea.com, bmund@bedea.com

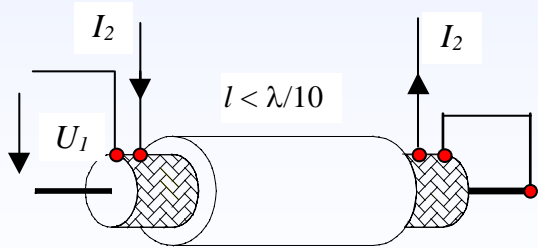
Transfer impedance & Screening attenuation

high frequencies: Screening attenuation

$$a_S = 10 \log (P_2/P_1) = 20 \log_{10} (U_2/U_1) \text{ [dB]}$$

Ratio of two powers --> length independent

low frequencies: Transfer impedance



$$Z_T = \frac{U_1}{I_2 \cdot l} \text{ [m}\Omega\text{/m]}$$

Ratio of $U/I = R \rightarrow$ length dependent, (Ohms law)

Wave length

$$\lambda = (c_0 \cdot v_k) / f$$

electrical long:

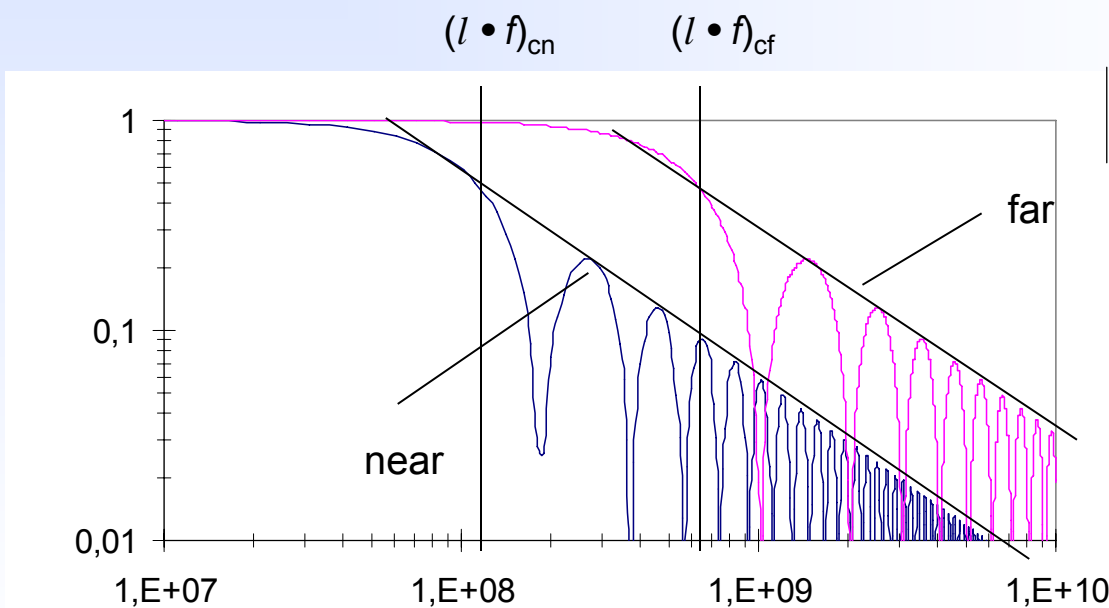
$$f > \frac{c_0}{2 \cdot l \cdot \left| \sqrt{\epsilon_{r1}} - \sqrt{\epsilon_{r2}} \right|}$$

electrical short:

$$f < \frac{c_0}{10 \cdot l \cdot \sqrt{\epsilon_{r1}}}$$

(IEC 62153-4-1)

Theory: The Summing Function S_{nf}



$$\left| S_{nf} \right| = \frac{\left| 2 \sin \left(\frac{(\beta_1 \pm \beta_2) \cdot L_c}{2} \right) \right|}{(\beta_1 \pm \beta_2) \cdot L_c}$$

$\approx \sin x/x$

β represents the phase constant of the inner resp. the outer circuit

low frequencies

$$\left| S_{nf} \right| \rightarrow 1$$

high frequencies

$$\left| S_{nf} \right| \rightarrow \frac{2}{(\beta_1 \pm \beta_2) \cdot l}$$

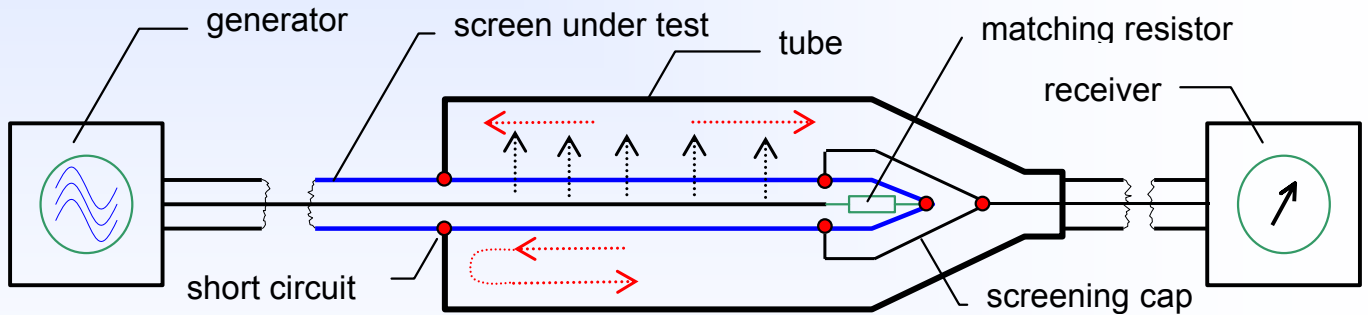
(oscillating behaviour)

introduced by Halme/Szentkuti 1988

Principle of the Triaxial test set-up

Transfer impedance & Screening attenuation

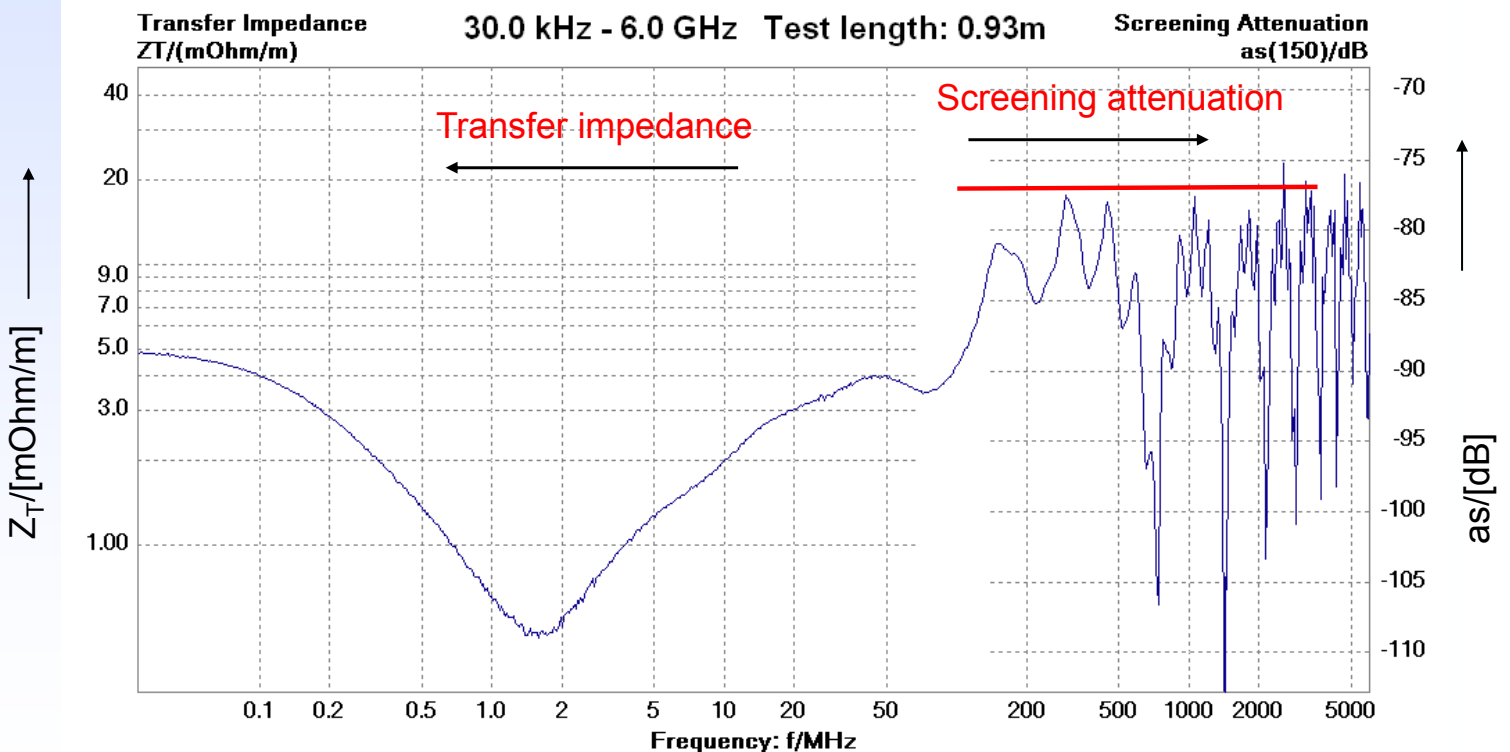
DC up to and above 12 GHz with one test set-up



Generator and receiver are included in a modern network analyser

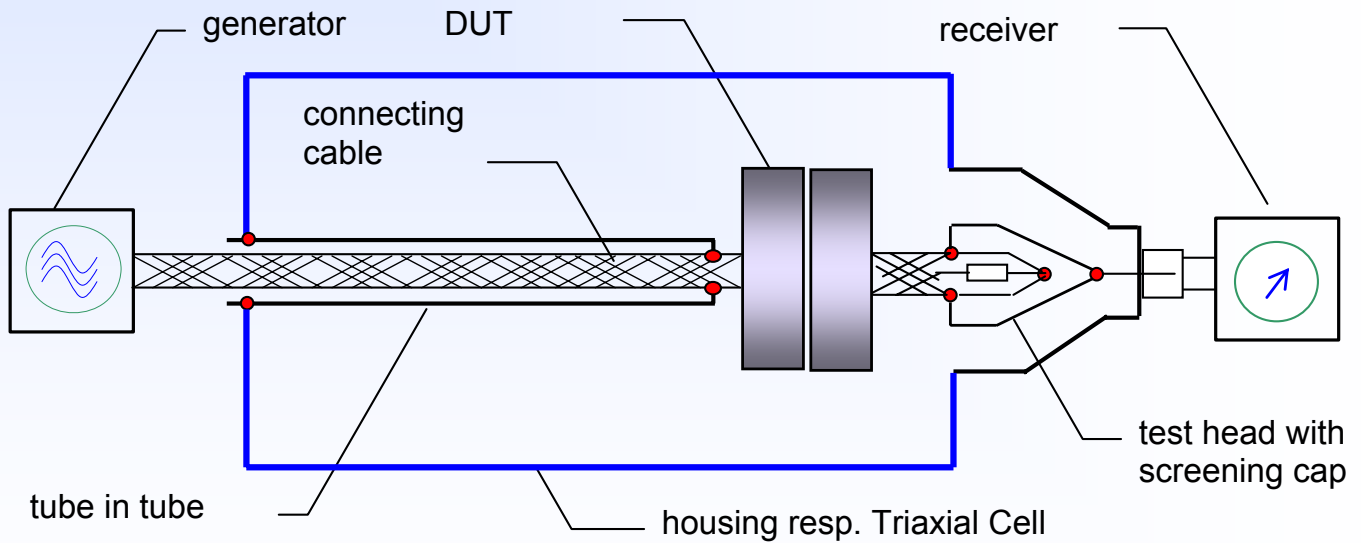
IEC 62153-4-3Ed2, Transfer impedance,
IEC 62153-4-4Ed2, Screening attenuation

Coupling transfer function (Ed.2) RG 214



Triaxial Cell with tube in tube, principle

The **Triaxial Cell procedure** is based on the principles of the Triaxial procedures according to IEC 62153-4-3, Transfer impedance and IEC 62153-4-4, Screening attenuation



IEC 62153-4-15, Transfer impedance and Screening attenuation with Triaxial Cell

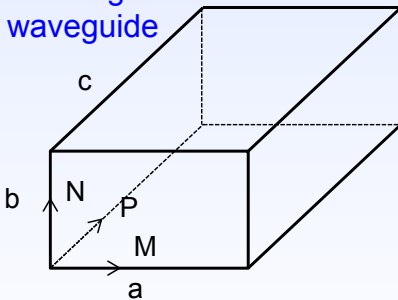
65rd IWCS Conference, Providence, Rhode Island, USA, October 2016

Bernhard Mund, bedea Berkenhoff&Drebes GmbH, Herborner Strasse 100, 35614 Asslar, Germany, www. bedea.com, bmund@bedea.com

Higher order modes

The Triaxial test procedure uses the principle of Transverse electromagnetic wave propagation (**TEM - waves**). At higher frequencies the Triaxial cell becomes in principle a **cavity resonator** respectively a **Rectangular waveguide** which exhibits resonances depending on its dimensions. Above these resonance frequencies, propagation of **TEM - waves** is disturbed and **measurements** of screening attenuation with triaxial test method **are limited**.

Rectangular waveguide



The cut-off frequency f_c of a cavity is given by:

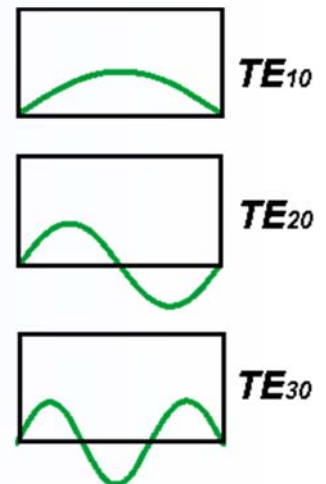
$$f_c = \frac{c_0}{2a}$$

$f_c = 500 \text{ MHz}$ for Cell 1000/300/300 and 1 GHz for Cell 1000/150/150

Resonance frequencies f_r are given by:

$$f_{mnp} = \frac{c_0}{2} \sqrt{\left(\frac{M}{a}\right)^2 + \left(\frac{N}{b}\right)^2 + \left(\frac{P}{c}\right)^2}$$

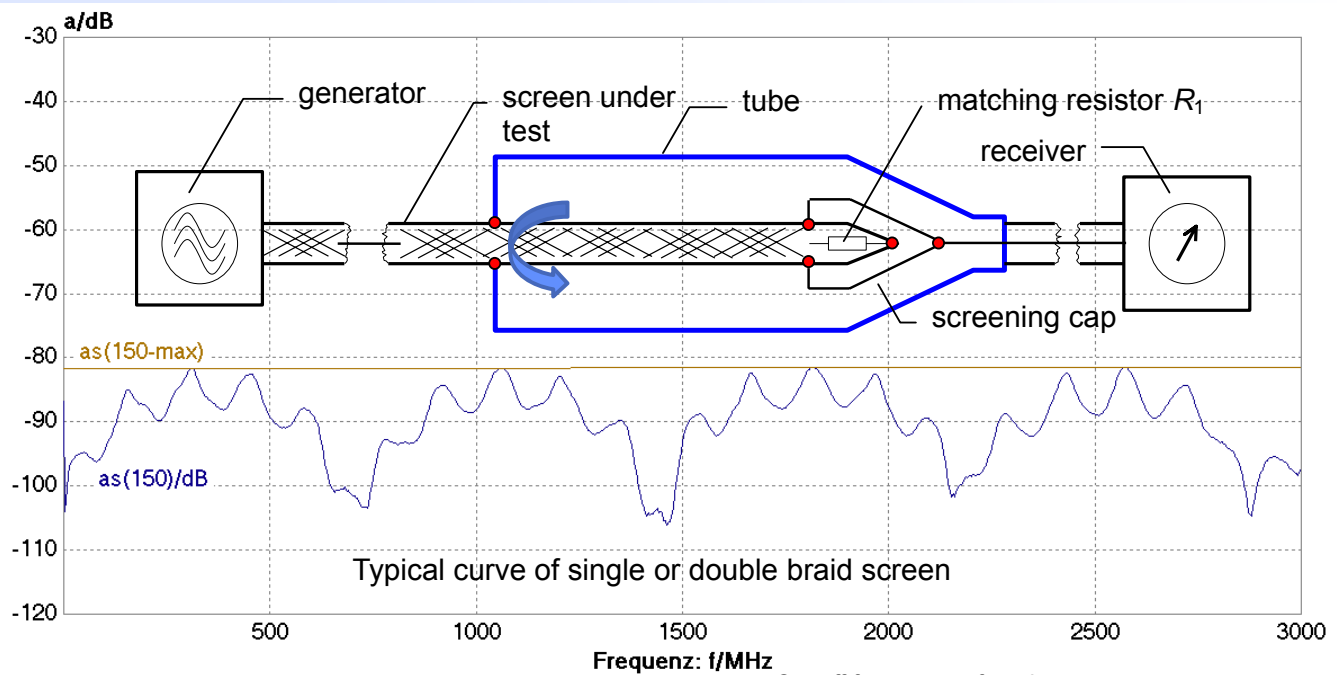
M, N, P	are the numbers of modes, where M, N stands for the transverse and P for the longitudinal integral multiple of the half of a wavelength ($M, N, P = 1, 2, 3$ where M or N can be set to zero)
a, b, c	are the dimensions of cavity; where a, b are coupled to the transverse and c to the longitudinal dimension
c_0	is the velocity of light in free space



65rd IWCS Conference, Providence, Rhode Island, USA, October 2016

Bernhard Mund, bedea Berkenhoff&Drebes GmbH, Herborner Strasse 100, 35614 Asslar, Germany, www. bedea.com, bmund@bedea.com

Double braid RG 214 with tube 40 mm



Measurement of single or double braid screen in the tube is regarded as reference measurement

Cut-off frequency of a tube:

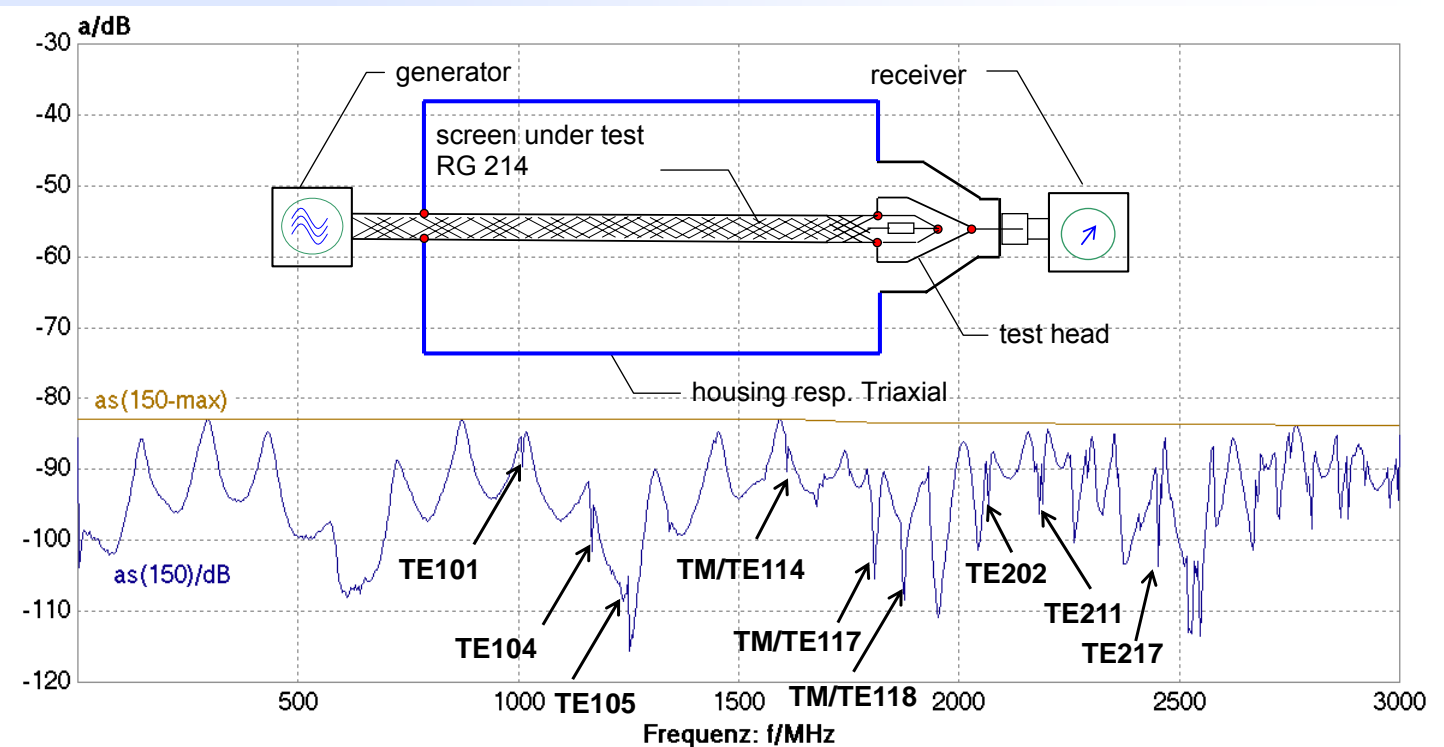
$$f_c = \frac{2 \cdot c_0}{\pi \cdot \sqrt{\epsilon_{r2}} \cdot (D_2 + d_1)}$$

CoMeT 40 ≈ 4,3 GHz

65rd IWCS Conference, Providence, Rhode Island, USA, October 2016

Bernhard Mund, bedea Berkenhoff&Drebes GmbH, Herborner Strasse 100, 35614 Asslar, Germany, www.bedeas.com, bmund@bedea.com

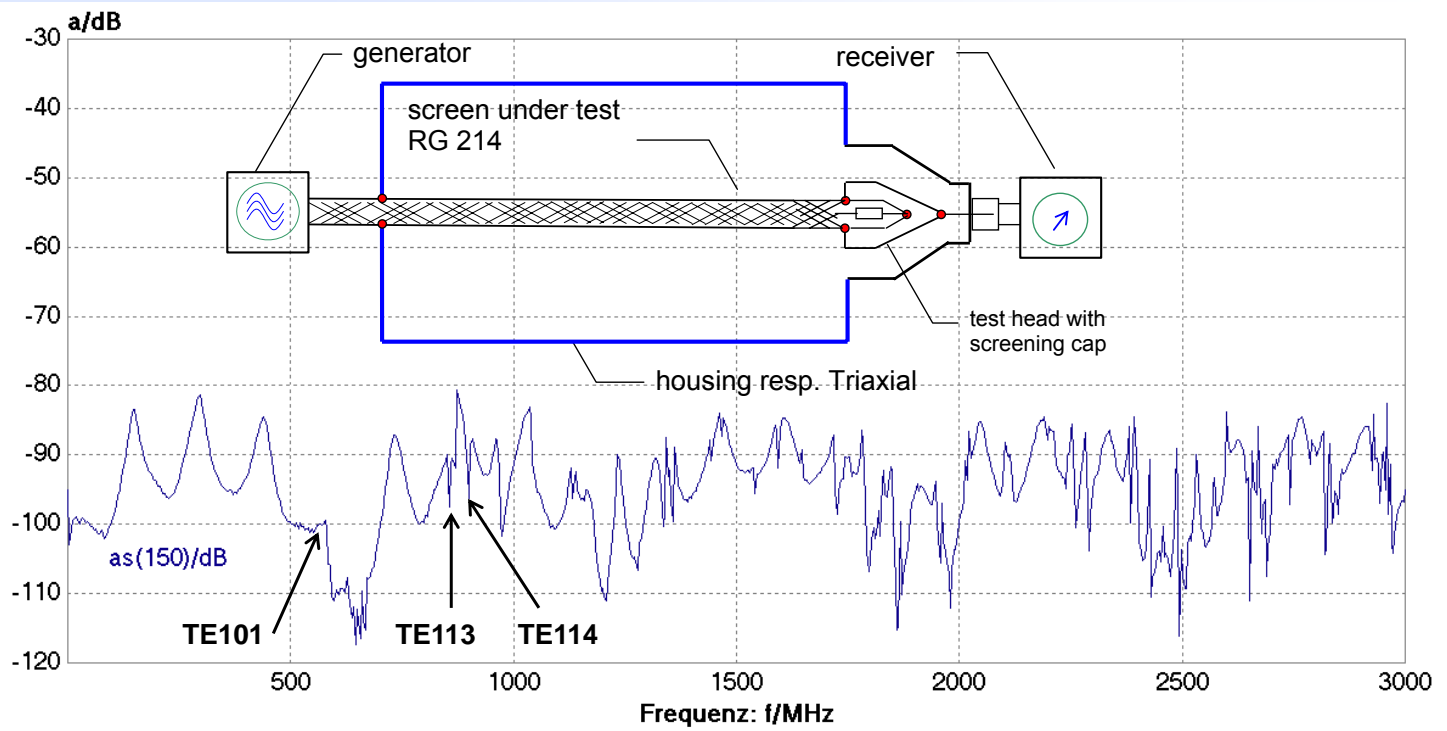
Higher order modes, Cell 1000/150/150



65rd IWCS Conference, Providence, Rhode Island, USA, October 2016

Bernhard Mund, bedea Berkenhoff&Drebes GmbH, Herborner Strasse 100, 35614 Asslar, Germany, www.bedeas.com, bmund@bedea.com

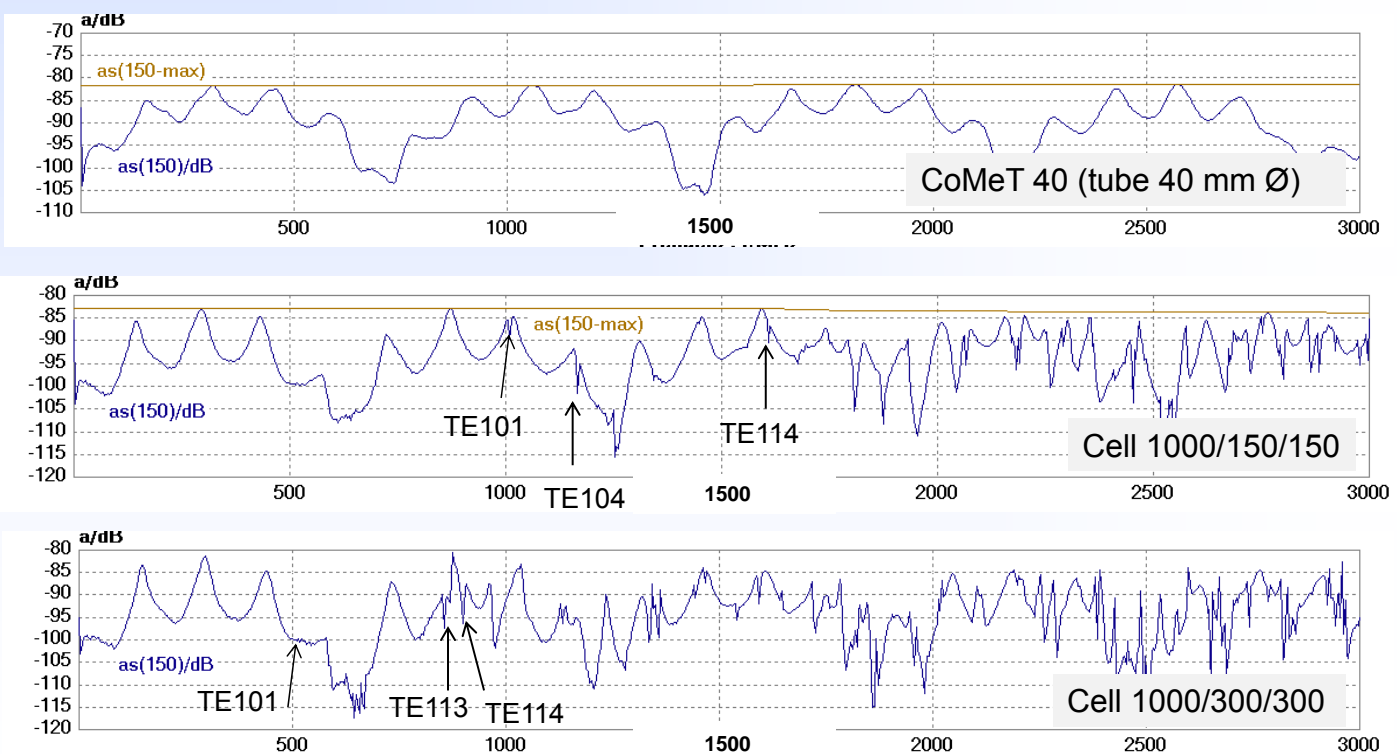
Higher order modes, Cell 1000/300/300



65rd IWCS Conference, Providence, Rhode Island, USA, October 2016

Bernhard Mund, bedea Berkenhoff&Drebes GmbH, Herborner Strasse 100, 35614 Asslar, Germany, www. bedea.com, bmund@bedea.com

Higher order modes in different Triaxial set-ups

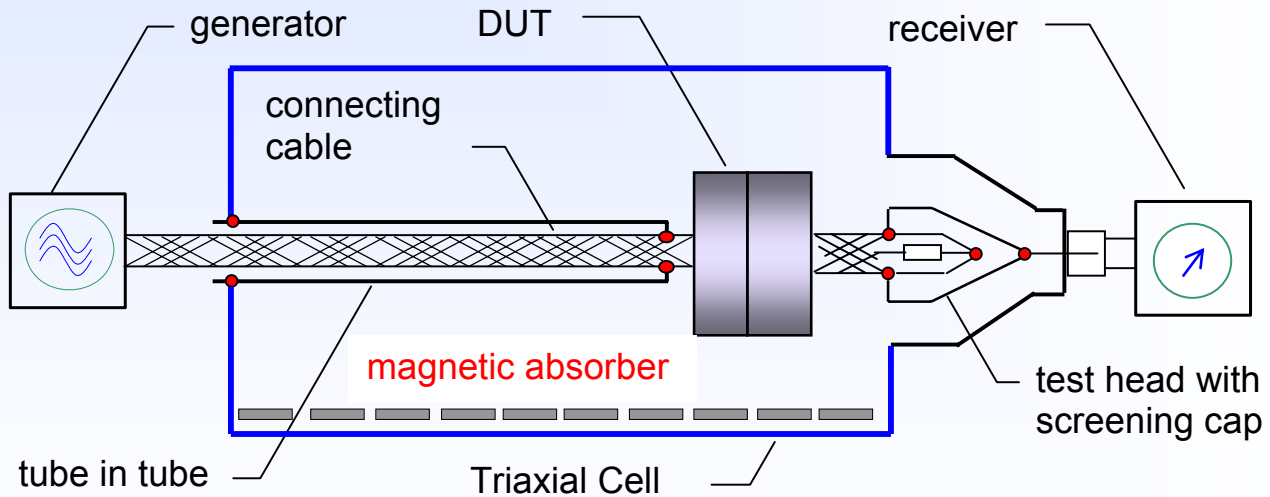


65rd IWCS Conference, Providence, Rhode Island, USA, October 2016

Bernhard Mund, bedea Berkenhoff&Drebes GmbH, Herborner Strasse 100, 35614 Asslar, Germany, www. bedea.com, bmund@bedea.com

Triaxial Cell with magnetic absorber

Higher order modes **can be easily suppressed** by using absorbing materials like ferrite tiles or by nanocrystalline or by magnetic absorbers placed in the Cell



IEC 62153-4-15, Transfer impedance and Screening attenuation with Triaxial Cell

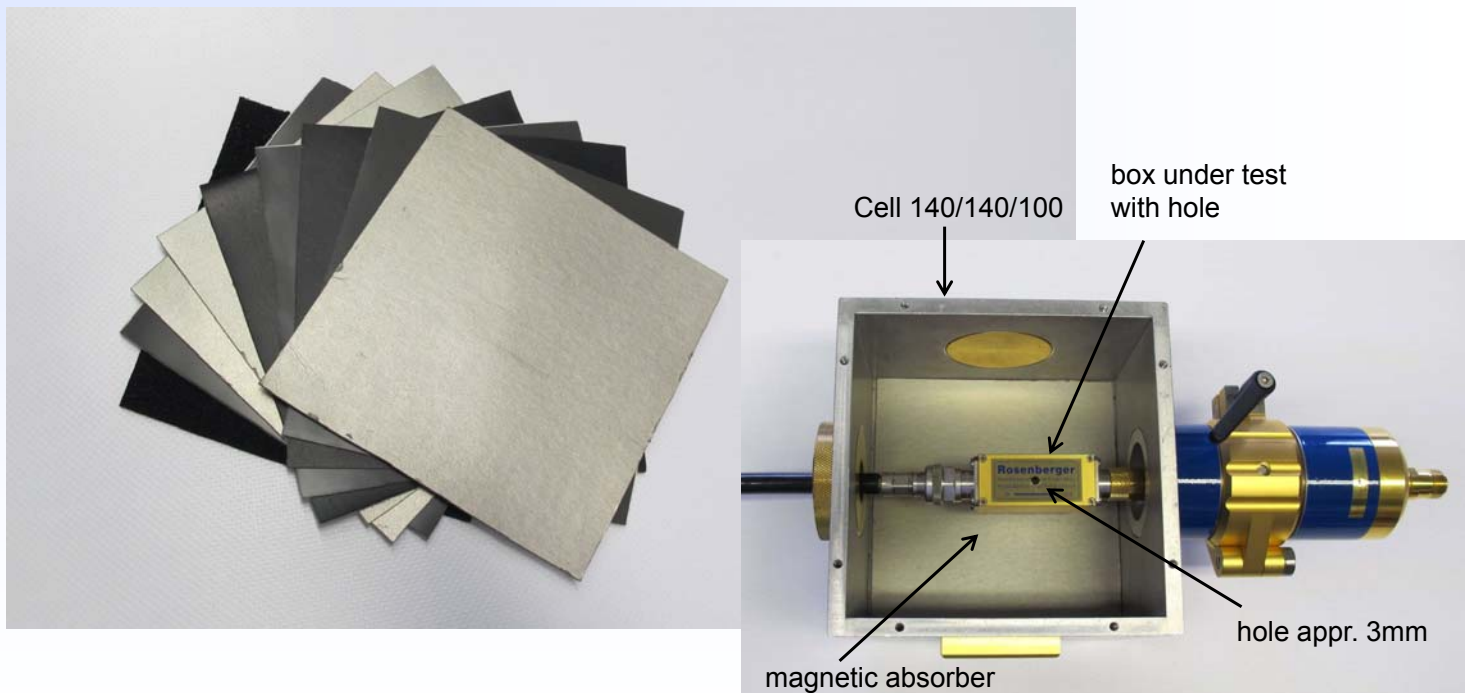
65rd IWCS Conference, Providence, Rhode Island, USA, October 2016

Bernhard Mund, bedea Berkenhoff&Drebes GmbH, Herborner Strasse 100, 35614 Asslar, Germany, www. bedea.com, bmund@bedea.com

13

Magnetic absorbers

Although other absorber material like ferrites or nanocrystalline absorbers could be useful, measurements were performed with magnetic absorbers due to the good mechanical characteristics and easy handling.

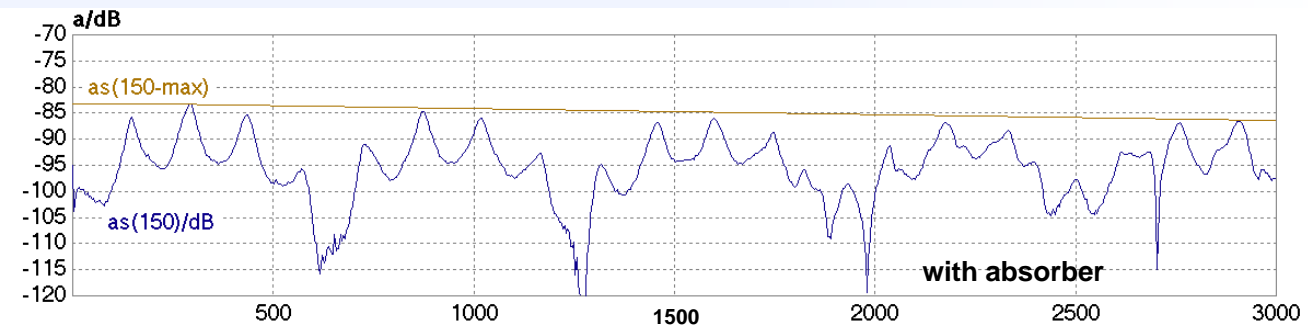
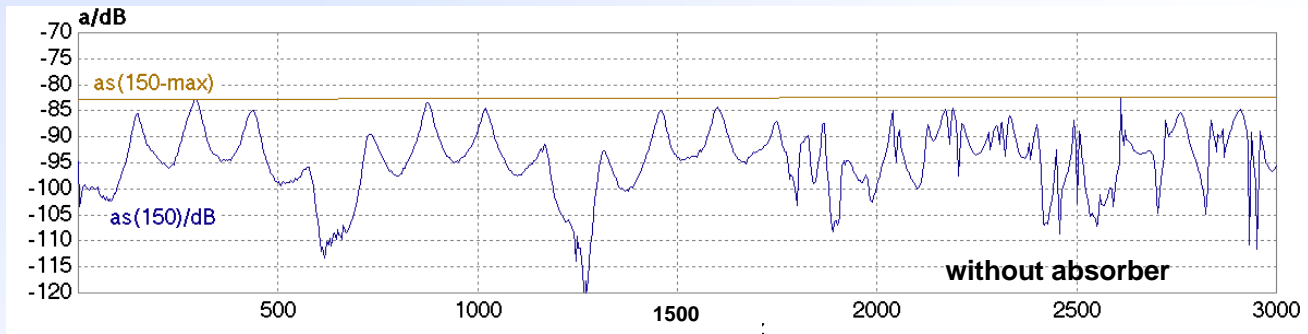


65rd IWCS Conference, Providence, Rhode Island, USA, October 2016

Bernhard Mund, bedea Berkenhoff&Drebes GmbH, Herborner Strasse 100, 35614 Asslar, Germany, www. bedea.com, bmund@bedea.com

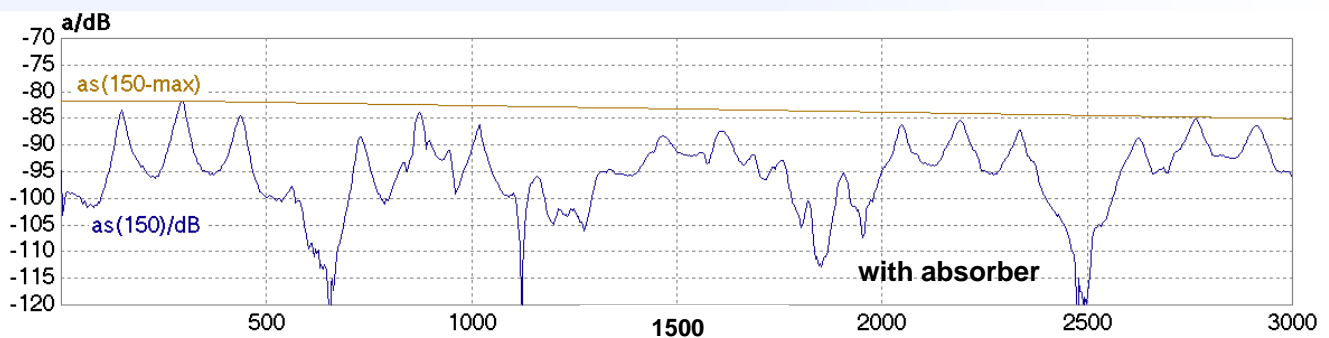
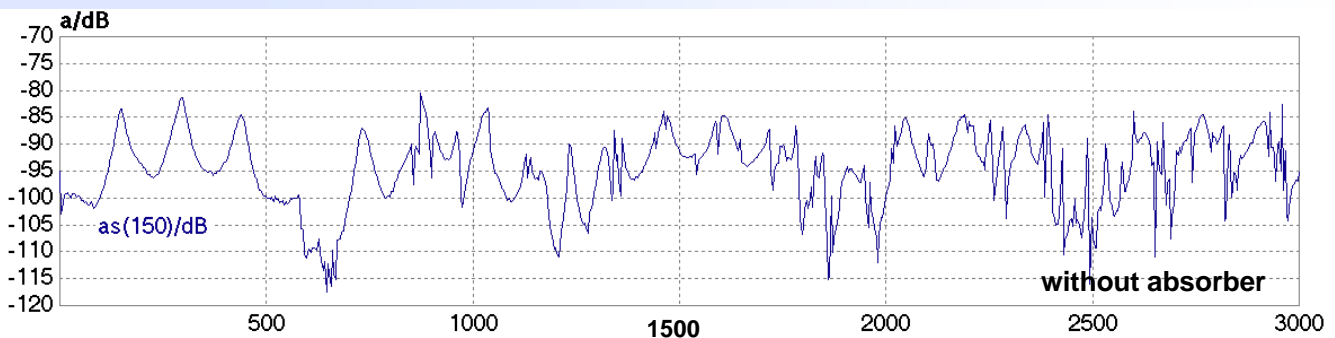
14

RG 214 in "Absorber – Cell" 1000/150/150



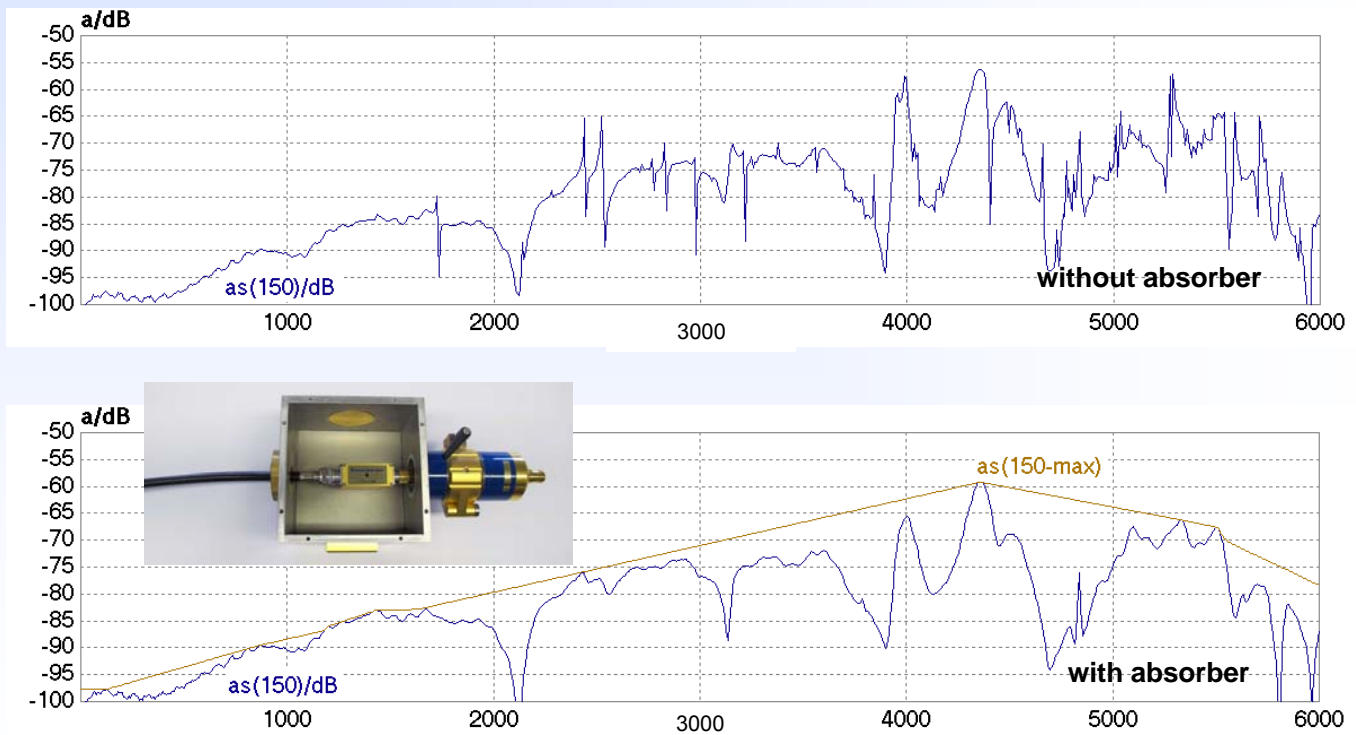
increase of a_s of about 3 dB at 3 GHz

RG 214 in "Absorber – Cell" 1000/300/300



increase of a_s of about 3dB at 3 GHz

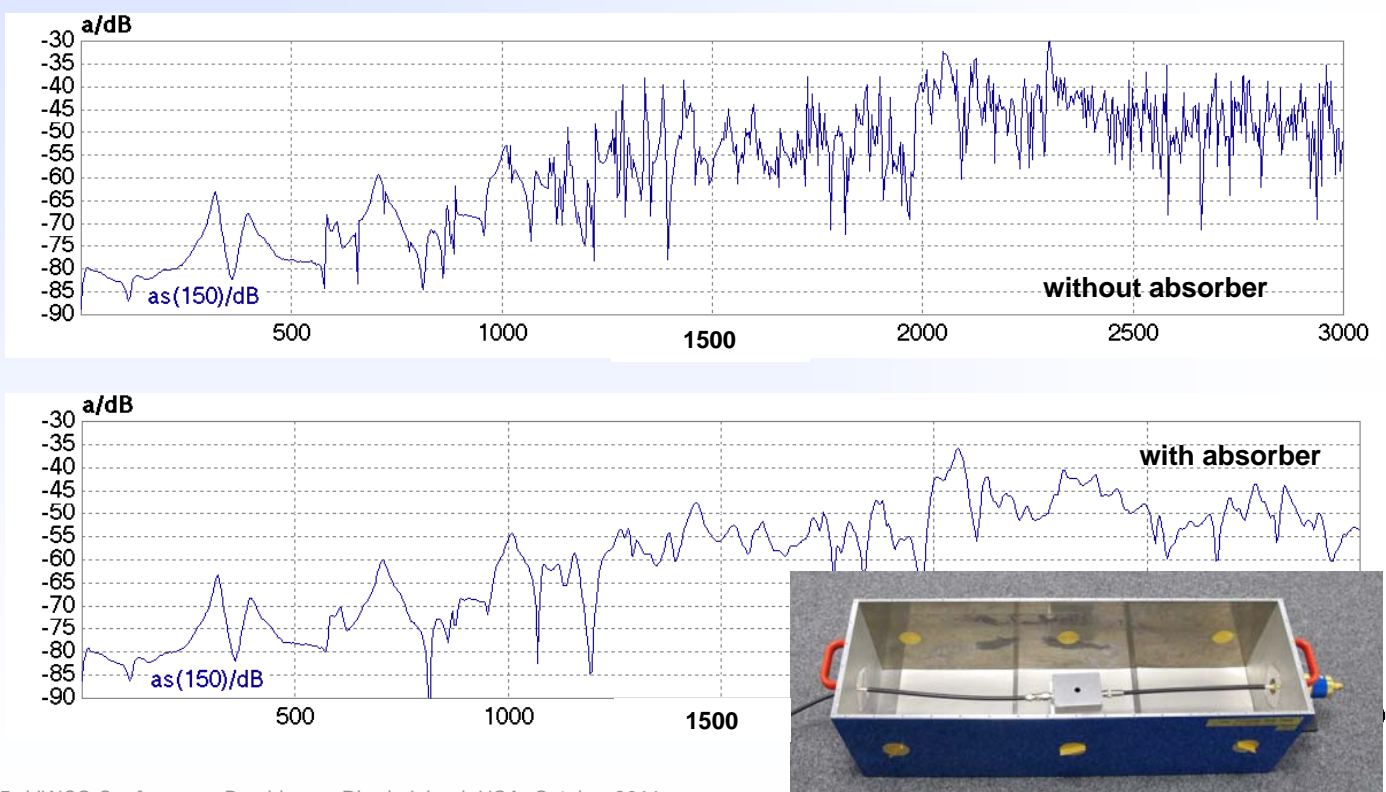
Box with hole in "Absorber – Cell" 140/140/100



65rd IWCS Conference, Providence, Rhode Island, USA, October 2016

Bernhard Mund, bedea Berkenhoff&Drebes GmbH, Herborner Strasse 100, 35614 Asslar, Germany, www. bedea.com, bmund@bedea.com

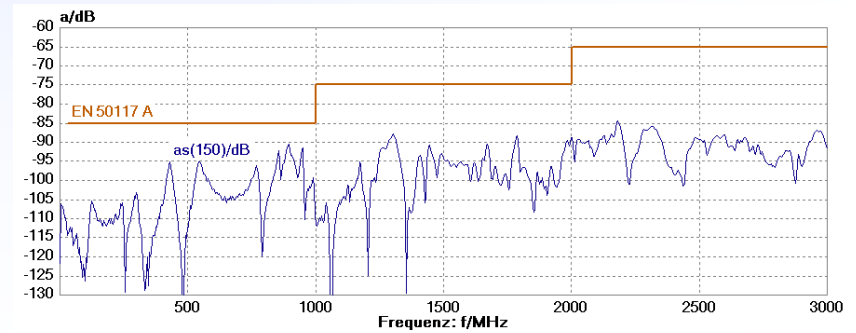
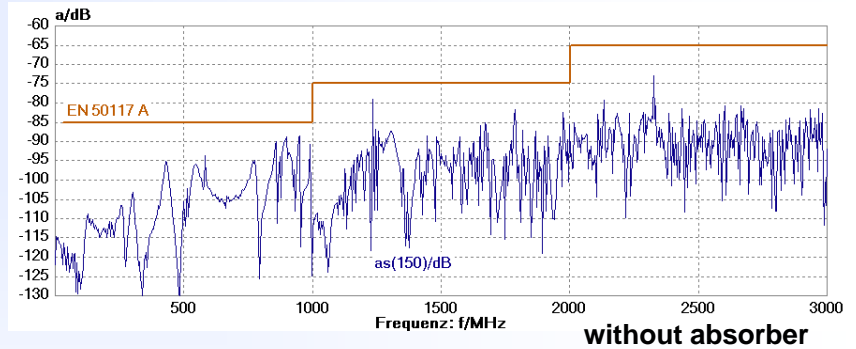
Box with hole in "Absorber – Cell" 1000/300/300



65rd IWCS Conference, Providence, Rhode Island, USA, October 2016

Bernhard Mund, bedea Berkenhoff&Drebes GmbH, Herborner Strasse 100, 35614 Asslar, Germany, www. bedea.com, bmund@bedea.com

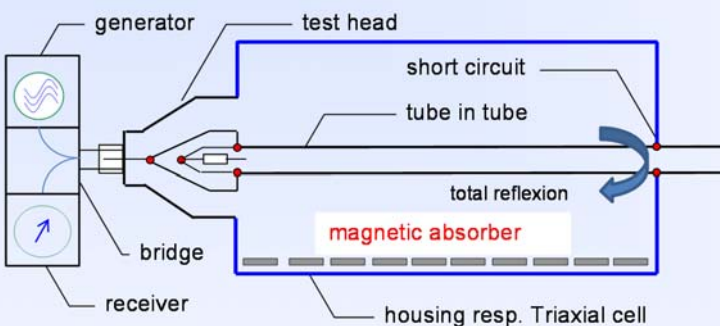
CATV-Tap-off with Triaxial Cell 1000/300/300



65rd IWCS Conference, Providence, Rhode Island, USA, October 2016

Bernhard Mund, bedea Berkenhoff&Drebes GmbH, Herborner Strasse 100, 35614 Asslar, Germany, www. bedea.com, bmund@bedea.com

Return loss, 1000/300/300

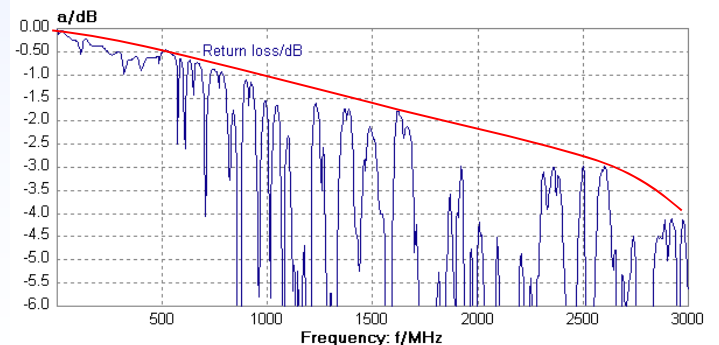
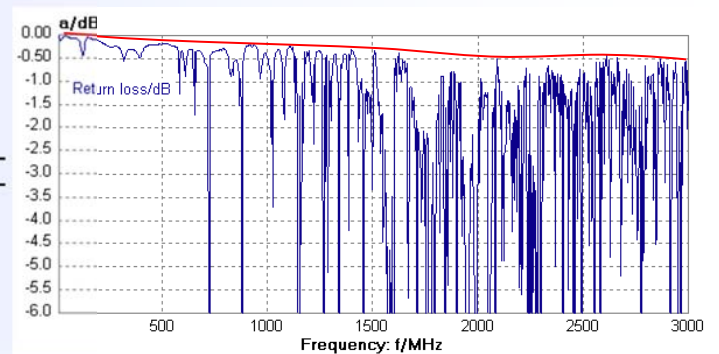


Principle of return loss measurement

Max. values of Return loss shows in principle the attenuation of the outer system

The additional attenuation of the Cell with absorber is about 3,5 dB at 3 GHz with tube 1000/300/300, which is in principle the same value as found as difference of the measurements of RG 214 in the tube CoMeT 40 and with the Cell 1000/300/300,(sheet 16).

It could be used for measurement correction (ffs).



65rd IWCS Conference, Providence, Rhode Island, USA, October 2016

Bernhard Mund, bedea Berkenhoff&Drebes GmbH, Herborner Strasse 100, 35614 Asslar, Germany, www. bedea.com, bmund@bedea.com

Conclusion

- The Triaxial test procedure is a well established procedure to measure **Transfer impedance Z_T** and **Screening attenuation a_S** on communication cables, connectors and components
- To measure larger components, the **Triaxial Cell** was developed
- The **drawback** of the Triaxial Cell are higher order modes which limits measurements in the range of TEM wave propagation.
- The problem can be solved easily by using absorber material like ferrites or magnetic absorbers in the Triaxial **“Absorber Cell”**
- Higher order modes can be suppressed and the usable frequency range can be extended **up to and above 3 GHz**.
- Therewith, a **simple and easy test method** of screening effectiveness of connectors and components is given from DC **up to and above 3 GHz**
- **IEC 62153-4-15** will be revised accordingly.
- Further questions: bmund@bedea.com

65rd IWCS Conference, Providence, Rhode Island, USA, October 2016

Bernhard Mund, bedea Berkenhoff&Drebes GmbH, Herborner Strasse 100, 35614 Asslar, Germany, www.bedea.com, bmund@bedea.com

21

*Thank you
for your attention*

???

bmund@bedea.com

www.bedea.com



Progress of International Standards for Triaxial Procedure

TS 62153-4-1	Introduction to electromagnetic (EMC) screening measurements	2014-01	published
62153-4-3Ed2	Surface transfer impedance - Triaxial method	2013-10	published
62153-4-4Ed2	Shielded screening attenuation, test method for measuring of the screening attenuation a_s up to and above 3 GHz	2015-04	published
62153-4-7Ed2	Shielded screening attenuation test method for measuring the Transfer impedance Z_T and the screening attenuation a_s or the coupling attenuation a_c of RF-Connectors and assemblies up to and above 3 GHz, Tube in tube method	2015-12	published
62153-4-9	Electromagnetic Compatibility (EMC) – Coupling attenuation, triaxial method	2008-03	Revision in preparation
62153-4-10Ed2	Shielded screening attenuation test method for measuring the Screening Effectiveness of Feedtroughs and Electromagnetic Gaskets	2015-11	published
62153-4-15	Test method for measuring transfer impedance and screening attenuation - or coupling attenuation with Triaxial Cell	2015-12	Revision in preparation
62153-4-16	Relationship between surface transfer impedance and screening attenuation, Conversion a_s and Z_T	2016-08	46/615/FDIS

65rd IWCS Conference, Providence, Rhode Island, USA, October 2016

Bernhard Mund, bedea Berkenhoff&Drebes GmbH, Herborner Strasse 100, 35614 Asslar, Germany, www.bedeas.com, bmund@bedeas.com

23

Literature

- [1] R. Lorch and G. Mönich, "Mode suppression in TEM cells", Proc. IEEE symposium, Santa Clara, CA, USA, Aug. 1996, pp. 40-42.
- [2] B. Mund and T. Schmid, "Measuring EMC of HV cables & components with the Triaxial Cell", Wire & Cable Technology International, January/March 2012.
- [3] Lauri Halme and Bernhard Mund, "EMC of cables connectors and components with Triaxial test set-up", Proceedings of the 62nd IWCS Conference, Charlotte, USA, pp 83 – 90, Nov. 2013.
- [4] D. Pouhè and G. Mönich, "On the interplay between equipment under test and TEM cells," IEEE Trans. Electromagn. Compat, vol. 50, no. 1, pp. 3-12, Feb. 2008.
- [5] D. Pouhè, "Mutual influence between the equipment under test and TEM cells", IEEE Trans. Electromagn. Compat., vol. 54, No. 4, pp. 726-737, Aug. 2012.
- [6] IEC 61000-4-20 Electromagnetic compatibility (EMC) – Part 4-20: Testing and measurement techniques - Emission and immunity testing in transverse electromagnetic (TEM) waveguides, 2011
- [7] Ismar Lucicanin, Optimierung der Triaxialen Zelle, Praktikumsbericht, HS-Reutlingen & bedea Asslar, October 2016

65rd IWCS Conference, Providence, Rhode Island, USA, October 2016

Bernhard Mund, bedea Berkenhoff&Drebes GmbH, Herborner Strasse 100, 35614 Asslar, Germany, www.bedeas.com, bmund@bedeas.com

24